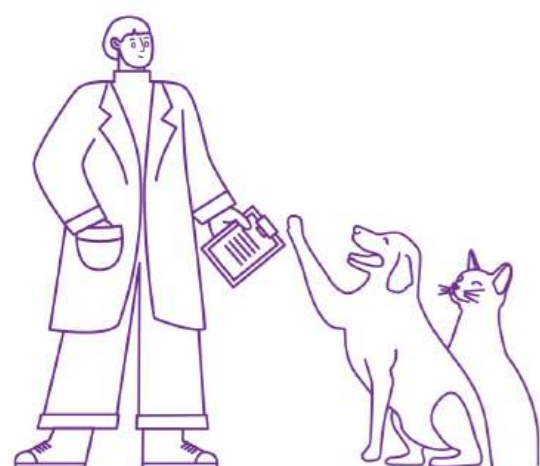


# Quantitative Real-time PCR Analyzer

Neopod M4 VET



Nexlab Co., Ltd.

☎ 400-902-9828 ✉ Neovet\_Dx@asintec.com 🌐 www.neovetdx.com

# Conduct Nucleic Acid Testing In House

- Cost Saving
- Time Saving
- Labor Saving
- Space Saving



Exclusive for Pets

Quantitative Real-time PCR Analyzer

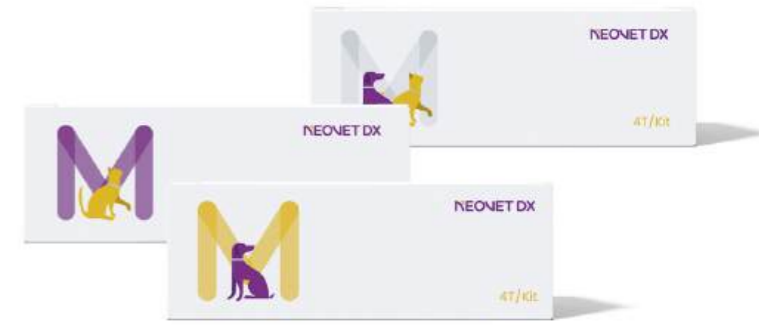
Neopod M4 VET

## Technical Specification

Sample Capacity	4*0.2mL
Compatible Consumables	0.2mL transparent single tubes/4-strip tube
Temperature Control Range	4-99°C
Temperature Ramp Rate	Maximum heating rate ≥8°C/s, maximum cooling rate ≥6°C/s
Temperature Uniformity	±1°C
Fluorescence Channels	4 channels: FAM, CY5, VIC, ROX
Fluorescence Intensity Detection Repeatability	CV≤3%
Fluorescence Intensity Detection Precision	CV≤5%

Sample Detection Repeatability	CV≤3%
Sample Linearity	≥0.98
Dimensions	217*158*177mm(L*W*H)
Weight	3.2kg
Interface	Bluetooth, USB
Power Supply	100-240V,50-60Hz,100VA
Operation Environment	Temperature 15-35°C, Humidity ≤85%

## Exclusive Nucleic Acid Testing Consumables for Pets



### Feline Testing Items

Item	Pathogens	Sample
FCo1	Feline Coronavirus(FCoV)	△
FP1	Feline Panleukopenia Virus (FPV)	△
FII	Feline Infectious Peritonitis Virus (FIPV)	👉
FPK1	Feline Polycystic Kidney Disease(PKD1) Genetic mutation	🐱
FR2	Feline Herpesvirus type 1(FHV-1)/ Feline Calicivirus(FCV)	🐱
FG2	Feline Panleukopenia Virus (FPV)/ Feline Coronavirus(FCoV)	△
FMC2	Feline Mycoplasma (Myc)/Chlamydia (Chi)	🐱
FRT2	Feline Leukemia Virus(FeLV)/ Feline Immunodeficiency Virus(FIMV)	👉
FBT2	Toxoplasma gondii(Tox)/ Bartonella henselae(Bh)	👉
FHCM4	Feline Hypertrophic Cardiomyopathy(FHCM) Genetic mutation	🐱
FG5	(Feline Gastrointestinal Panel of 5 Items) Feline Coronavirus(FCoV) / Feline Astrovirus(FeAstV)/ Giardia/Tritrichomonas foetus(TF)/ Feline Panleukopenia Virus (FPV)	△
FD6	(Feline Gastrointestinal Panel of 6 Items) Feline Coronavirus(FCoV)/ Feline Astrovirus(FeAstV)/Giardia/ Tritrichomonas foetus(TF)/Cryptosporidium/ Feline Bocavirus(Fbov)	△
FA6	(Feline Anemia Panel of 6 Items) Mycoplasma haemominutum(Mhm)/ Mycoplasma haemofelis(Mhf)/ Mycoplasma turicensis(Mtc)/ Feline Leukemia Virus(FeLV)/ Feline Immunodeficiency Virus(FIMV)/ Bartonella henselae(Bh)	👉
FR6	(Feline Respiratory Panel of 6 Items) Feline Herpesvirus type 1(FHV-1)/ Feline Calici virus(FCV)/Mycoplasma(Myc)/ Chlamydia (Chi)/Feline Influenza Virus(FIV)/ Bordetella bronchiseptica(Bb)	🐱

### Canine Testing Items

Item	Pathogens	Sample
CD1	Canine Distemper Virus(CDV)	🐾
CP1	Canine Parvovirus (CPV)	△
CL1	Leishmania	👉
CB2	Babesia canis(BC)/Babesia gibsoni (BG)	👉
CLT2	Toxoplasma gondii(Tox)/Leptospira	👉
CG2	Canine Parvovirus(CPV)/Canine Coronavirus(CCV)	△
CA6	(Canine Anemia Panel of 6 Items) Babesia canis (BC)/Babesia gibsoni (BG)/ Anaplasma phagocytophilum canis (APC)/ Ehrlichia canis (EC)/ Mycoplasma haemocanis (Mhc)/ Hepatozoon canis (HC)	👉
CR7	(Canine Respiratory Panel of 7 Items) Canine Distemper Virus(CDV)/ Canine Adenovirus type II(CAV-2)/ Canine Parainfluenza Virus(CPIV)/ Bordetella bronchiseptica(Bb)/ Canine Herpesvirus(CHV)/Mycoplasma/ Canine Influenza Virus(CIV)	🐾

### Canine&Feline Testing Items

Item	Pathogens	Sample
HP1	Helicobacter Pylori(Hp)	△
TO1	Toxoplasma gondii(Tox)	👉
HP2	Non-Helicobacter pylori Helicobacter(NHPh)/ Helicobacter Pylori(Hp)	△
GT2	Giardia/Tritrichomonas foetus(TF)	△

- △ Anal swab
- 🐾 Ocular&oral&nasal swab
- 👉 EDTA whole blood
- 👉 Pleural/Ascites effusion

\*Under development