


Product Catalog

Better healthcare for all



 | Search Mindray Animal Medical

www.mindrayanimal.com

info@mindrayanimal.com

P/N:ENG-Product Catalog IVD-230230X14P-20211010

© 2021 Shenzhen Mindray Animal Medical Technology Co., LTD. All rights reserved.



In-Vitro
Diagnostics



About Us

As the public awareness of animal care continues to increase, the global animal medical equipment market has maintained a double-digit compound annual growth rate in recent years, which exceeds that of human medical equipment market. The animal medical industry has a great potential to flourish in the years to come.

Shenzhen Mindray Animal Medical Technology Co., LTD. (short as Mindray Animal Medical), as a new wholly-owned subsidiary of Mindray Group, is dedicated to providing advanced medical devices and comprehensive solutions for various types of animals.

With a broad portfolio of products that covers Medical Imaging Systems, In-Vitro Diagnostics, Patient Monitoring & Life Support of animals, we're improving the healthcare experience for animals and enhancing confidence for animal caregivers.

Specializing in innovative research and development for animals, Mindray Animal Medical takes a solid social responsibility, constantly improving various solutions for animal healthcare and promoting the development of the global industry.

A Global Footprint Promote Industry-University-Research Cooperation



As a fast-growing business player in the animal healthcare industry, we have built a global footprint, with our products and solutions serving more than 100 countries and regions over the world.

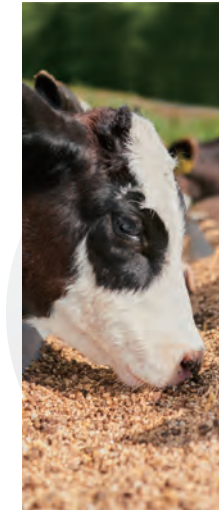
In China, our products and solutions have been serving nearly 15,000 animal hospitals and more than 70% of animal research institutions, and we have established cooperation with a large number of leading veterinary universities and medical experts.

In the international market, we have been chosen by many leading veterinary institutions as their trusted partner. Our products and solutions have been widely recognized across the world including the United States, UK, Germany, France, Italy, Spain and more.

Comprehensive & Competent Solutions for Various Scenarios



Companion Animals



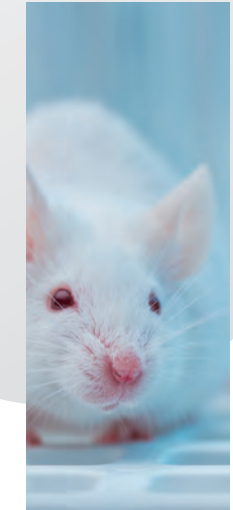
Farm Animals



Equines



Exotic Animals



Laboratory Animals

Powered by the leading R&D capabilities and in-depth customer insights, Mindray Animal Medical delivers comprehensive solutions which efficiently satisfy all sorts of demands of veterinarians in various clinical scenarios. Our Medical Imaging Solution, OR Solution, and In-Vitro Diagnostics Solution provide a broad portfolio of products in the diagnosis, treatment, and monitoring of animals, including Portable and Cart-based Color Ultrasound Systems, Digital Radiography Imaging System, Patient Monitor, Respiratory Anesthesia Machine, Rigid and Flexible Endoscope, Infusion Pump, Hematology Analyzer, Biochemistry Analyzer, PCR System, Urine Analyzer, etc., striving to create more efficient workflows and more user-friendly experience.

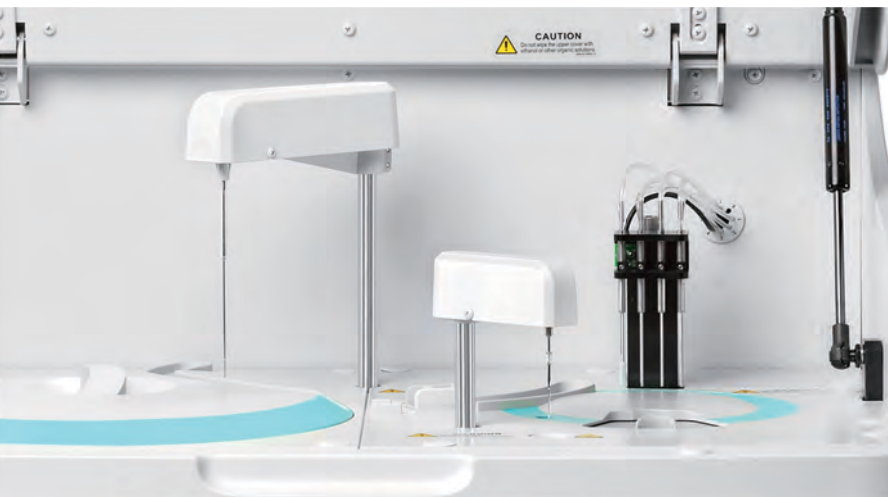
Covering not only animal hospitals for dogs, cats, and other companion animal diagnosis and treatment, but also farm animals, equines, exotic animals and laboratory animals, our abundant products can be used for clinical practices in various application scenarios.

Together with global experts, Mindray Animal Medical is committed to offering equal access to high-quality healthcare for animals by providing comprehensive and competent healthcare product solutions.

Accurate and Reliable

In-Vitro Diagnostics

We offer a broad spectrum of In-Vitro Diagnostic solutions, including the 3-part and 5-part differential hematology analyzers, biochemistry analyzer, PCR system, urine analyzer, etc. By delivering accurate and reliable solutions, we can satisfy the increasing needs of all kinds of labs in veterinary hospitals of different sizes.





BC-75R Vet

Auto Hematology Analyzer

Mindray's patented SF Cube technology (3D cell analysis) with forward and side-scatters, couple with fluorescent signals; the BC-75R Vet facilitates the accurate detection of animal white blood cells and nucleated red blood cells and reticulocytes. It also detects abnormal blood cells.

The BC-75R Vet reshapes veterinary hematology with innovations, and advanced technology, featuring a high-performance design and excellent reliability. The valuable parameters are proven clinically relevant. Besides the core laboratory, this built-in multi-species setting satisfies facilities in veterinary scientific research and reference laboratories.



Accurate 3D Technology



Innovative PLT Technology



Advanced Reticulocyte Measurement



Easy Operation

10⁺ Yrs

Experience in Standardized Laboratory Management

20⁺ Yrs

Technology Accumulated of Hematology Analyzers

40⁺

Innovative Technologies

BC-5000 Vet

Auto Hematology Analyzer

BC-5000 Vet, the 5-Part hematology analyzer with state-of-the-art technology and simple operations, is a true hematology flagship. The reagents packages are economical, together it delivers high quality diagnostic results in today's veterinary laboratories. The tri-angle laser scatters, an advanced diagnostic technology, leads to a remarkable 5-part WBC differential, particularly in samples with high Eosinophil.



Smaller Footprints



Dedicated Algorithms for Different Animals



Accurate 5-part WBC Differentiation



BC-30 Vet

Auto Hematology Analyzer

With over 20 years of experience in the hematology field, Mindray Animal Medical strived to meet and exceed customers' requirements with continual innovative solutions. The BC-30 Vet, an accurate 4-part differential hematology analyzer, culminates such effort — it is compact yet powerful, full-featured, and affordable.



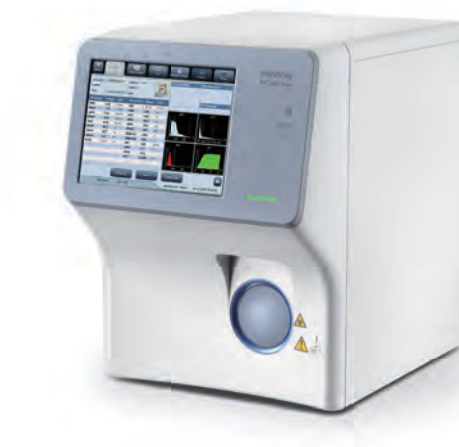
Accurate Measurement of Eosinophil



Reliable Performance in Cold Environment



Weekly Instead of Daily Maintenance





BC-2800 Vet

Auto Hematology Analyzer

The BC-2800 Vet is a compact, fully automatic hematology analyzer with built-in micro sampling technology. This 3-part differential analyzer, with ten parameters for a CBC, comes with user-friendly software that eases operation and enhances efficiency. There are 13 pre-programmed species and three customizable species slots, which will satisfy the general requirements of most veterinary clinics.



- Highly Reliable Results
- Multiple Animal Species
- Easy to Use

BS-240 Vet

Veterinary Chemistry Analyzer

Incorporating the high quality and standards of the human-IVD platform, the new BS-240 Vet has an iterative algorithm for veterinary applications and ensures the test result's accuracy and reliability. The newly designed software offers the customized test panels and repeats analysis of any specific parameter.



- Reliable Performance
- Batch Loading Samples
- Flexible Menu



UA-60V

Veterinary Urine Analyzer

The UA-60V is a urine analyzer explicitly designed for veterinary clinics. Two built-in urine panels are available, and the simplified operation highly improves the workflow with exceptional efficiency.

- Portable Design
- Easy Operation, Efficient Workflow
- Two Panels, More Parameters



BS-240 Vet Test Menu							
Liver Function		Myocardial zymogram		Lipid		Inflammation	
	Renal Function		Glucose		Pancreas		Anemia
ALT	UA	CK	GLU	TC	α-AMY	Fe	Ca
AST	UREA	CK-MB	HbA1c	TG	LIP	TRF	P
γ-GT	CREA	LDH	FUN	HDL		UIBC	Mg
ALP	CysC	α-HBDH	β-HB	LDL	CRP	G6PD	CO2
T-Bil	mALB	ACE					Na
D-Bil		HCY					K
TBA							CL
TP							
ALB							
CHE							
ADA							
5'-NT							
AFU							



Vetube 30

Veterinary Chemistry Analyzer

The new Vetube 30 uses advanced microfluidic technology. The diluent and lyophilized reagent are preset in the rotors. After adding the blood samples, the analyzer automatically combines and quantifies the mixture. The thermostatic system is designed to control the reaction temperature, thus promoting accurate and reliable test results.



Accurate Test



Integrated Design



Maintenance Free

9 panels for different scenarios



Health checking

Liver and Kidney Profile

Preanesthetic Profile

Critical Care

Electrolyte

Liver Profile

Kidney Profile

Basic Examination

Large Animal Profile



Vetgenies 8

Real-Time PCR System

The Vetgenies 8 applies fluorescence quantitative PCR technology to identify pathogens at the genetic level. Featuring high sensitivity and specificity, the Vetgenies 8 replicates and amplifies low content nucleic acid fragments. Also, the nucleic acid extraction-free technology is designed with straightforward and efficient operation progress.



Next Generation Diagnosis, Precise and Efficient



Easier Workflow to Test



Faster Results in 90mins



Respiratory Tract



Gastrointestinal Tract



Systemic Diseases

There are total 25 tests which can help veterinarian to diagnose various diseases in the respiratory tract, gastrointestinal tract and Physiological system of dogs and cats.



About Mindray

Founded in 1991, Mindray is one of the leading global providers of medical devices and solutions. Firmly committed to our mission to “advance medical technologies to make healthcare more accessible”, we are dedicated to innovation in the fields of Patient Monitoring & Life Support, In-Vitro Diagnostics, and Medical Imaging System. Today, Mindray’s products and services are serving healthcare facilities in over 190 countries and regions.

Mindray has set animal medical equipment as one of the key strategic target. In order to provide complete animal healthcare solutions worldwide, Mindray established Mindray Animal Medical in the October of 2020.

Mindray Animal Medical will inherit Mindray's in-depth understanding of medical device market, accumulated technological capabilities, solid R&D experience and quality control expertise to bring better healthcare for all.

